



# **Building Community Resilience Through Sustainable Enterprises**

*Amy Gaman*  
*Executive Director*  
*Nuru Nigeria*

# GOAL STATEMENT

**To equip rural, vulnerable households in Northeastern Nigeria, to improve livelihoods and build resilience capacities to cope with conflict, environmental, economic, and social shocks and stressors for stability and prosperity.**



# Nuru's Objectives

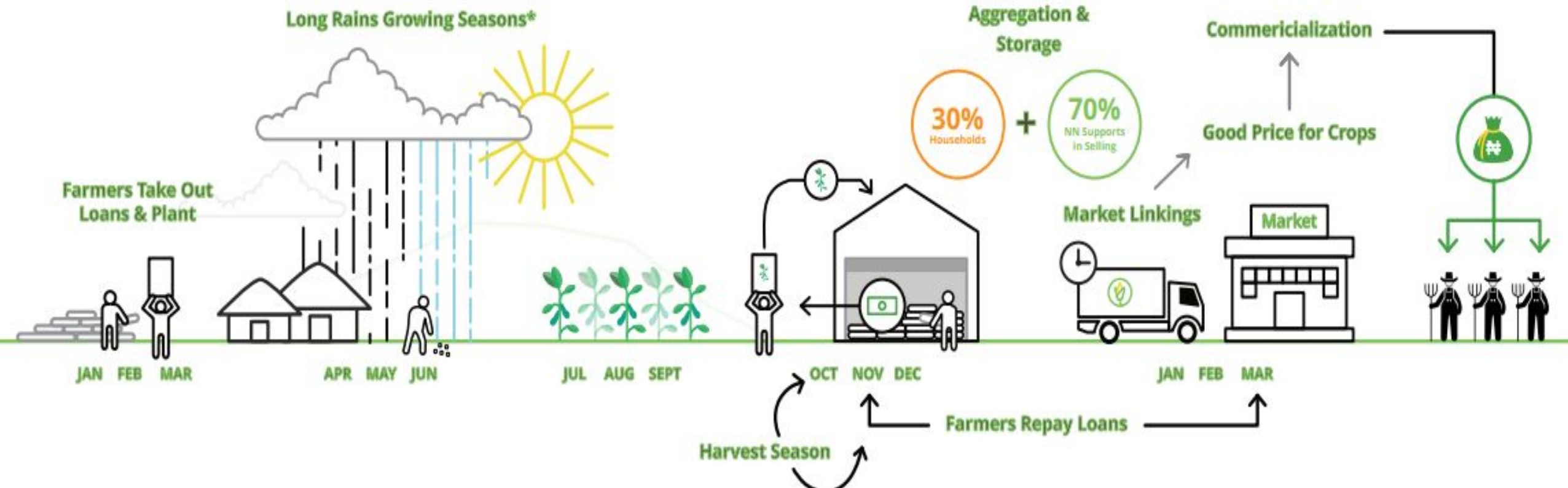
- **Develop local solutions**
- **Eradicate extreme poverty among rural vulnerable households**
- **Increase household income through diversifying livelihoods.**
- **Build resilience corridor in northeastern Nigeria**
- **Increase social cohesion and improve communities that may otherwise be exploited by violent extremist groups**



# Inclusive and Sustainable Livelihood Approach



Soybeans and Groundnut value chain

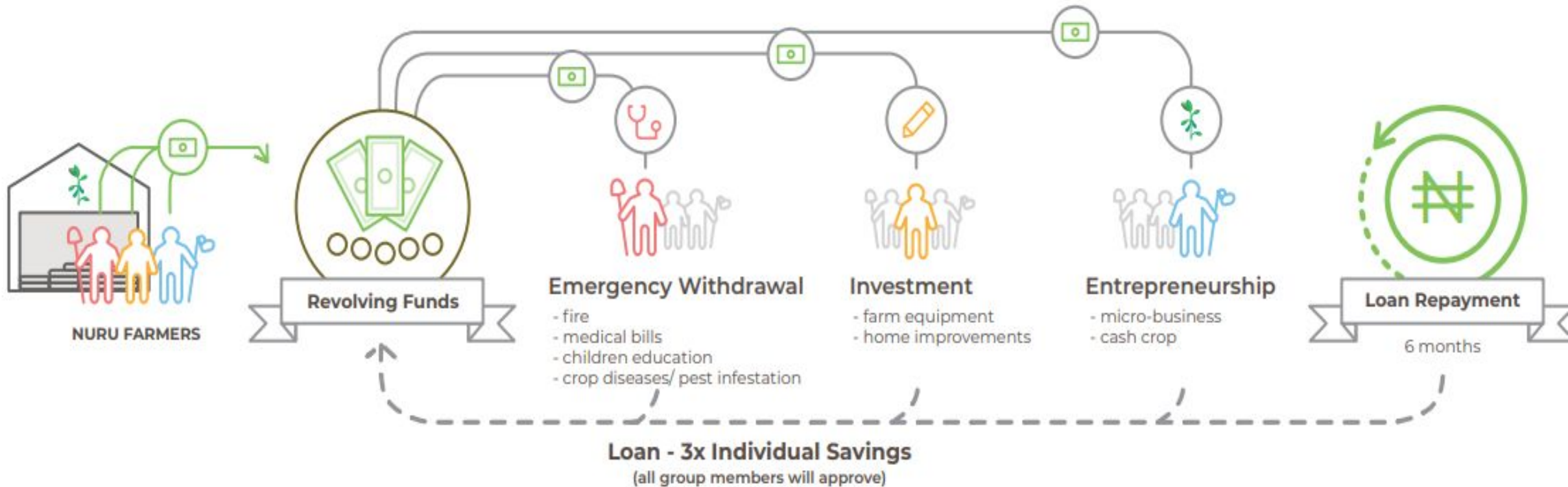


# Strengthened Resilience Among People

Digital Mobile Money Platform



Financial Inclusion



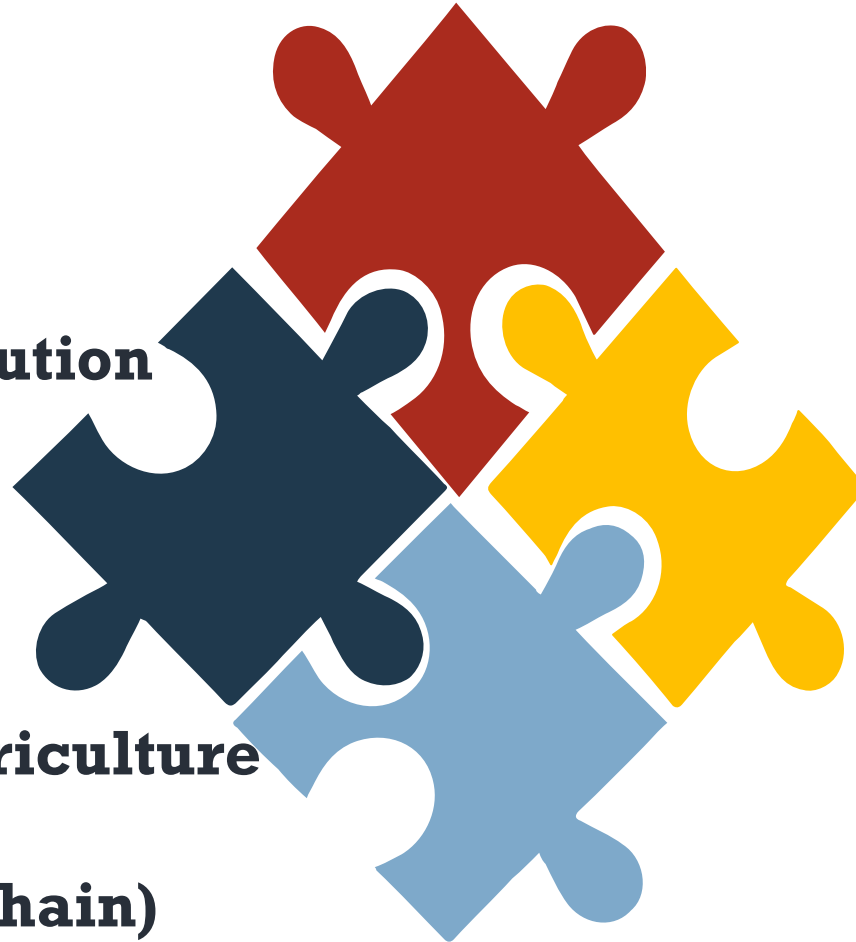
# ....Strengthened Resilience among systems

---

**Locally Led**  
**Locally Driven**  
**Locally Owned**  
**Locally sustained solution**

---

**Nutrition Sensitive Agriculture**  
**Farmers group**  
**Agribusiness (Value Chain)**  
**Small Ruminant Fattening**



---

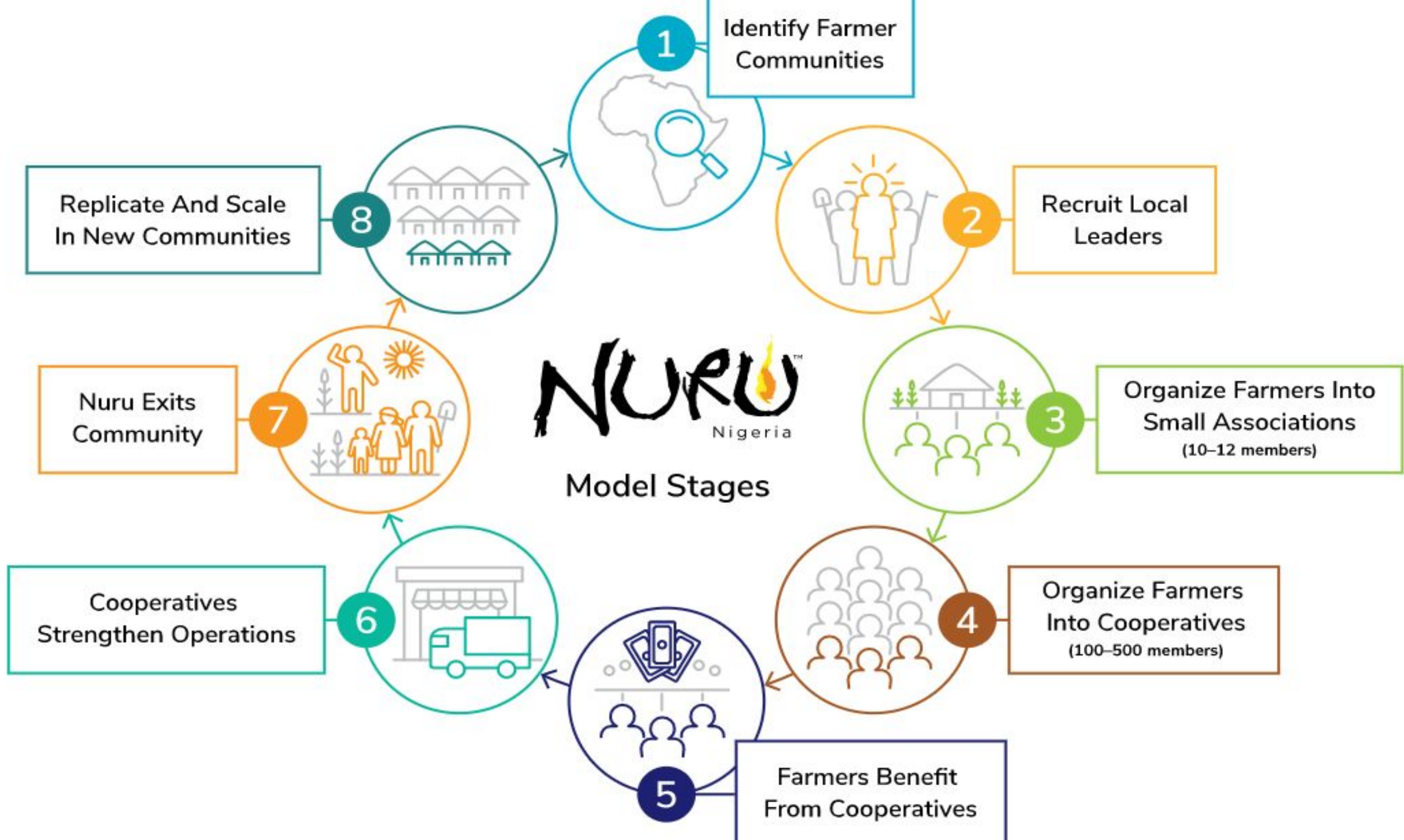
**Conflict Sensitivity**  
**Trauma Awareness**  
**Do No Harm**  
**Inclusivity**

---

**Capacity Development**  
**Financial Inclusion**  
**Gender Transformative**  
**Sustainability**

# Program successes to date

- **About 43% household income increased**
- **73% women inclusion in NN's program**
- **39% Youth inclusion**
- **Access to sustainable household nutrition (perma - garden)**
- **Increased access to financial services**
  - **24% increase in HH savings**
  - **Access to loans for emergency**
- **Access to market systems**
- **Clear path to sustainability as established during COVID - 19**



THANK YOU